

JBC

The Soldering Co.



Automatic-Feed Soldering Stations

When repetition becomes perfection

Automatic-Feed Soldering Station

- Consistently dispenses programmed amounts, ensuring **uniform soldering joints**.
- Work without interruptions makes the **process more efficient**.
- It makes soldering cable and THT components easier by freeing one hand for better stability, while **ergonomic hand positioning enhances repetitive processes**.

Solder Wire

The station allows a solder reel of **up to 2 kg / 4.40 lb (DIN 100)**.

Specifications

Ref. - Voltage (AC)	ALE-910VB - 100V ALE-110VB - 120V ALE-210VB - 230V	ALEP-910VA - 100V ALEP-110VA - 120V ALEP-210VA - 230V
Selectable temperature	90 to 450 °C / 190 to 840 °F	
Operating temp. range	10 to 50 °C / 50 to 122 °F	
Output peak power	150 W - 23.5 V	
Connectivity	USB - B	
Tip-to-ground resistance	<2 ohms	

Complies with CE standards. ESD Protected.

Quick Cartridge Exchanger and Holder

Save time and increase productivity by using **Quick Cartridge Exchanger**, which facilitates **fast and safe use** of different cartridge geometries. **Cartridge Holder** allows storing of up to four cartridges.

Intelligent Heat Management

The station incorporates **Sleep & Hibernation Modes**, that automatically lower the tip temperature when the tool is placed in the tool holder. As a result, JBC tips last 5 times longer than other brands.

Tip Cleaning System

The stand includes an integrated tip cleaner with antisplash rubber to **prevent splashing of solder particles** and maintain the work area clean.

The most complete **Tip Cleaning System** allows you to choose from three safe methods according to your needs: metallic wool, sponge and wiper.

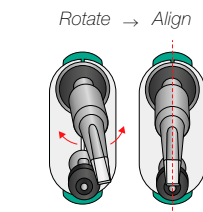
Automatic-feed soldering irons:

Achieve solder **consistency across repetitive joints** to optimize your production line, while getting the **precision** and **comfort** you need with these two options:

ALE250 Automatic-Feed Soldering Iron

Easy Cartridge Alignment

The rotation system guarantees that the cartridge is perfectly aligned with the guide allowing higher precision while soldering.



Cartridge Range

ALE250 Automatic-Feed Soldering Iron is compatible with both **straight** and **bent tips**, allowing you to adapt to your specific working needs.

ALEP250 Angled Automatic-Feed Soldering Iron

Dragging button

The tool features an ergonomically positioned button that allows the user to automatically feed the exact amount of solder programmed in the station.

This design improves comfort, reduces hand strain, and enhances overall work efficiency.



GALE10V Guide Kit

Both tools are compatible with solder wires **from 0.38 mm / 0.015 in up to 1.80 mm / 0.073 in**.

Achieve high-precision solder wire dispensing by using these 3 working modes:

Continuous

Ideal for products with solder joints that require different amounts of tin.

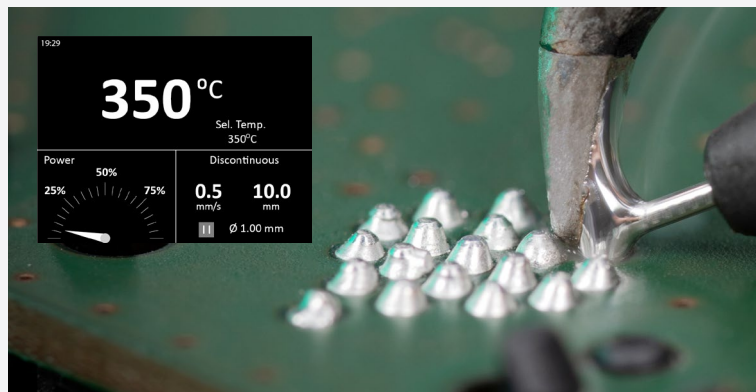
Allows the operator to manually control the amount of solder wire being fed at a constant speed.



Discontinuous

Ideal for repetitive soldering jobs.

Allows the operator to program the solder-wire speed and length that will automatically be dispensed on each click.



Program

Ideal for soldering jobs that require pre-tinning or a controlled feeding of tin at different speeds.

The operator can customize up to 5 programs, each one with 3 different steps, making the process more dynamic and efficient.



Straight Solder Wire Guide Kits

References with Solder-Wire Perforation

Ref.	Solder Wire Ø
GALE08V	0.8 mm / 0.032 in
GALE10V	1.0 mm / 0.040 in
GALE12V	1.2 mm / 0.047 in
GALE15V	1.5 mm / 0.059 in
GALE16V	1.6 mm / 0.063 in



References without Solder-Wire Perforation

Ref.	Solder Wire Ø
GALE04D	0.38-0.40 mm / 0.015-0.016 in
GALE05D	0.46-0.56 mm / 0.018-0.022 in
GALE06D	0.60-0.64 mm / 0.023-0.025 in
GALE07D	0.70-0.78 mm / 0.028-0.031 in
GALE08D	0.80-0.82 mm / 0.032-0.033 in

Ref.	Solder Wire Ø
GALE10D	0.90-1.10 mm / 0.036-0.044 in
GALE12D	1.14-1.27 mm / 0.045-0.051 in
GALE15D	1.50-1.57 mm / 0.060-0.063 in
GALE16D	1.60-1.63 mm / 0.063-0.065 in
GALE18D	1.80 mm / 0.073 in

Curved Solder Wire Guide

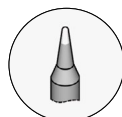
Compatible with the **ALE250** Automatic-Feed Soldering Iron for applications requiring straight cartridges.

Ref.	Solder Wire Ø
0032589	0.4 -1.2 mm / 0.015 - 0.047 in



Cartridge Ranges

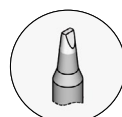
C250 Cartridge Range is designed to work with the **Straight Guide**, while the **C245L Cartridge Range** is used in combination with the **Curved Guide**.



Conical



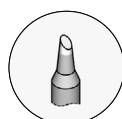
Conical Bent



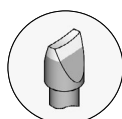
Chisel



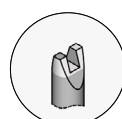
Chisel Bent



Bevel



Round Connector



Chip Components



Drag

